



CLUTCH ACCESSORIES



70-101

HIGH PERFORMANCE THROWOUT BEARINGS DISPLAY BOX PACKAGED

Hays High Performance Throwout Bearings have been developed to withstand the high-spring pressure and high RPM operation common to racing clutches. Each bearing face is heat-treated and blanchard-ground to ensure trueness. The collars are heat-treated for strength and machined to close tolerances for secure bearing fork attachment. The ball-bearing race is packed with heat-resistant moly-based grease for better lubrication and longer life. A nylon liner and bearing retainer is also featured for cooler and quieter operation. See pages 4-20 for complete application by vehicle.



70-110

70-115

SELF-ALIGNING THROWOUT BEARING

DISPLAY BOX PACKAGED

Designed specifically for installations with clutch to transmission misalignment resulting in noise and vibration, the Hays Self-Aligning Throw-Out Bearing minimizes these conditions. Clutch alignment can also vary due to normal wear and tear. Self-Aligning Bearings with their rugged performance characteristics are also a functional upgrade from standard bearings on older cars, when applicable. Refer to the application chart or reference guide for part number selection.

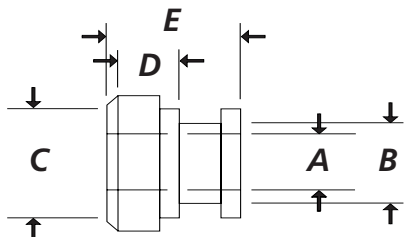
THROWOUT BEARING SPECIFICATIONS

Part #	Type	A	B	C	D	E
70-101		1.375	1.623	2.607	.714	1.254
70-104		1.375	1.624	2.929	.901	1.444
70-110		1.254	1.933	2.607	1.634	2.200
70-115		1.436	1.663	2.853	.870	1.230
70-120		1.75	1.960	3.320	1.125	1.500
70-170		1.425	1.625	2.875	1.340	1.975
70-201	S	1.375	1.623	2.607	.714	1.254
70-226	S	1.436	1.645	2.680	.740	1.432
70-230	S	1.436	1.672	2.500	.575	1.165
70-234	S	1.436	1.773	2.500	.710	1.340

S = Self Aligning Bearing



70-201



ADJUSTABLE CLUTCH CABLE AND QUADRANT KIT FOR MUSTANGS

SKIN PACKAGED

The Hays Clutch Cable Kit is a must when installing a high-performance clutch in 1981-2004 Ford 5.0L Mustangs. This kit features a billet aluminum quadrant for strength that replaces the weak factory O.E. plastic unit which is fast-wearing and prone to failure. The quadrant is designed to increase leverage, therefore decreasing required pedal effort. The heavy-duty low friction cable is made of stranded steel and has durable metal fittings with the added feature of an adjustable fork end for exact adjustment of clutch release and pedal freeplay. Comes complete with all hardware and detailed instructions for ease of installation.



76-228

Adjustable Clutch Cable and Quadrant Kit for Mustangs

76-228

Replacement Clutch Cable for 76-228

76-229